

# AD SERIES

Electronic Solutions  
Design & Manufacture

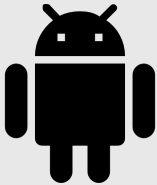


## AVX430 Professional Player



Based on the powerful Rockchip RK3288 this is a multi purpose commercial Android/Linux engine, supporting up to 2160p60 and has a host of commercial features.

### Key Features



Android



Linux  
Linux

4K

2160p60



24 Hour  
Commercial Use



+44(0)870 005 5520

UK Head Office: Unit 49 Eldon Way,  
Paddock Wood, Kent, TN12 6BE

eva2@adseries.com



## AVX430 Professional Player

### Overview

Based on the powerful Rockchip RK3288 this is a multi purpose commercial Android/Linux engine, supporting up to 2160p60 and has a host of commercial features.

### Markets

Commercial devices, IOT solutions. In-store AV product demos; high quality public information distribution for display & exhibitions; delivery of safety and help information in public environment

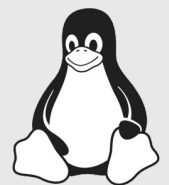
### Benefits

- Supports Android and Linux
- Commercial grade
- Cost-effective – simple play and control features at a price to support volume deployment
- Compatible with a range of our own and 3<sup>rd</sup> party accessories
- Customisable – mass customization options
- Internal 16GB memory or from memory device
- Auto boot auto play on power on

### Key Features



Android



Linux™

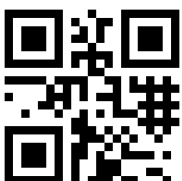
Linux



24 Hour  
Commercial Use

4K

2160p60



+44(0)870 005 5520

UK Head Office: Unit 49 Eldon Way,  
Paddock Wood, Kent, TN12 6BE

eva2@adseries.com

## AVX430 – Standard Housing Version

Product Details	
Product Code	AVx 430
SKU	11004069101
Display Information	
Max Resolution	3840x2160
Display Rotation	Landscape & Portrait
Hardware & OS	
CPU	RK3288, Quad Cortex-A17, Up to 1.8G
RAM	2GB
Storage	16GB
OS	Android / Linux
Graphics Hardware	Mali-T764
Software	AD player / Customer APK
Integrated MCU	Optional
Operation	
Ports	1x 2.0 HDMI, 1x 3.5mm Stereo, RJ45 10M/100M, 2x USB 2.0, 1x Micro USB
Video Format	AVI, MKV(XVID/px/H.264), MOV, TS, M2TS, RM, RMV8, FLV, 3GP, MPEG, DA, MP4
Audio Format	MP3, WMA, AAC FAC
Remote Control	Yes with infrared
Auto-start play	Yes
General Information	
Power Supply	12V 2A
Housing	Robust powder-coated metal
Unit Size (LxWxHmm)	170 (191 fixing flanges) x 96 x 20
Unit Weight (kg)	0.45





Expansion Options – AVX430

Overview

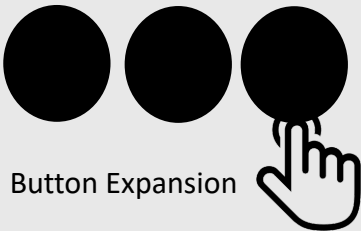
The AVX430 can be all expanded to enable further interactivity.

Markets

Commercial devices, IOT. In-store AV product demos; high quality public information distribution for display & exhibitions; delivery of safety and help information in public environment

\* We provide a range of default commercial APKs with the players or can be used with own / 3rd party apks/

Key Features



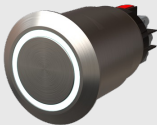
Button Expansion



Mobile Data



Optical Audio



Illuminated button / sensor interfaces

Chipset	Model	Unit Size (LxWxHmm)	Enhanced supported	Mobile data module / Sim (MD)	4 Inputs + Optical Audio Out (E01)	10 Inputs + serial connection options (E02)
RK3288	AVx430-MD	170 (191 fixing flanges) x 96 x 39	Y	Integrated Mobile module for relevant contry/s		
	AVx430-MD-E01			Integrated Mobile module for relevant contry/s	Illuminated button / sensor support, optical audio output with demo product keep awake options.	
	AVx430-MD-E02			Integrated Mobile module for relevant contry/s		Illuminated button / sensor support, powered Serial interface, offboard MCU structured control processing.
	AVx430-E01				Illuminated button / sensor support, optical audio output with demo product keep awake options.	
	AVx430-E02					Illuminated button / sensor support, powered Serial interface, offboard MCU structured control processing.

