

AD SERIES

Electronic Solutions
Design & Manufacture



AVX260 Professional Player



Low-cost commercial Android Player, designed for those with a limited budget. Supports up to 1080p and has a host of commercial features..

Key Features



Android



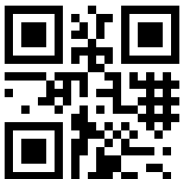
Linux



1080p



24 Hour
Commercial Use



+44(0)870 005 5520

UK Head Office: Unit 49 Eldon Way,
Paddock Wood, Kent, TN12 6BE

eva2@adseries.com



OEM available



AVX260 Professional Player

Overview

Low-cost commercial Android/Linux Player, designed for those with a limited budget. Supports up to 1080p and has a host of commercial features.

Markets

Commercial devices, IOT solutions. In-store AV product demos; high quality public information distribution for display & exhibitions; delivery of safety and help information in public environment

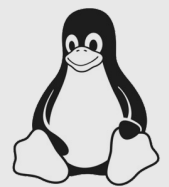
Benefits

- Supports Android and Linux
- Commercial grade
- Cost-effective – simple play and control features at a price to support volume deployment
- Compatible with a range of our own and 3rd party accessories
- Customisable – mass customization options
- Internal 8GB memory or from memory device
- Auto boot auto play on power on

Key Features



Android



Linux™

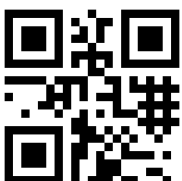
Linux



24 Hour
Commercial Use



1080p



+44(0)870 005 5520

UK Head Office: Unit 49 Eldon Way,
Paddock Wood, Kent, TN12 6BE

eva2@adseries.com

AVX260 – Standard Housing Version

Product Details	
Product Code	AVx260
SKU	11004059101
Display Information	
Max Resolution	1920x1080
Display Rotation	Landscape & Portrait
Hardware & OS	
CPU	A64 Quad Core Cortex A53, Up to 1.6G
RAM	1GB
Storage	8GB
OS	Android/Linux
Graphics Hardware	Mali-400MP2
Software	AD player / Customer APK
Integrated MCU	Optional
Operation	
Ports	1x 1.4 HDMI, 1x 3.5mm Stereo, RJ45 10M/100M, 2x USB 2.0, 1x Micro USB
Video Format	AVI, MKV(XVID/px/H.264), MOV, TS, M2TS, RM, RMV8, FLV, 3GP, MPEG, DA, MP4
Audio Format	MP3, WMA, AAC FAC
Remote Control	Yes with infrared
Auto-start play	Yes
General Information	
Power Supply	12V 2A
Housing	Robust powder-coated metal
Unit Size (LxWxHmm)	170 (191 fixing flanges) x 96 x 20
Unit Weight (kg)	0.45



+44(0)870 005 5520

UK Head Office: Unit 49 Eldon Way,
Paddock Wood, Kent, TN12 6BE

eva2@adseries.com



Expansion Options – AVX260

Overview

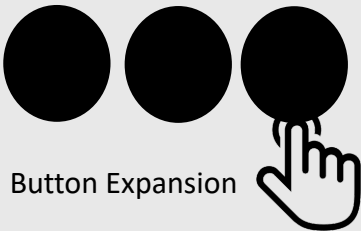
The AVX260 can be all be expanded to enable further interactivity.

Markets

Commercial devices, IOT. In-store AV product demos; high quality public information distribution for display & exhibitions; delivery of safety and help information in public environment

* We provide a range of default commercial APKs with the players or can be used with own / 3rd party apks/

Key Features



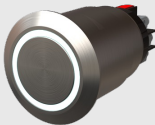
Button Expansion



Mobile Data



Optical Audio



Illuminated button / sensor interfaces

Chipset	Model	Unit Size (LxWxHmm)	Enhanced supported	Mobile data module / Sim (MD)	4 Inputs + Optical Audio Out (E01)	10 Inputs + serial connection options (E02)
A64	AVx260-MD	170 (191 fixing flanges) x 96 x 39	Y	Integrated Mobile module for relevant contry/s		
	AVx260-MD-E01			Integrated Mobile module for relevant contry/s	Illuminated button / sensor support, optical audio output with demo product keep awake options.	
	AVx260-MD-E02			Integrated Mobile module for relevant contry/s		Illuminated button / sensor support, powered Serial interface, offboard MCU structured control processing.
	AVx260-E01				Illuminated button / sensor support, optical audio output with demo product keep awake options.	
	AVx260-E02					Illuminated button / sensor support, powered Serial interface, offboard MCU structured control processing.

