

AD SERIES

Electronic Solutions
Design & Manufacture



Straight Integration Kiosk – 15" – Product Code;FABK15INT



FEATURES				
Position	Floor standing			
Screen angle (°)	10-60 deg			
Tablet / Screen Size	15.6			
Swivel	355 deg			
Format	Portrait	✓	Landscape	✓
Colours	White	✓	Black	✓

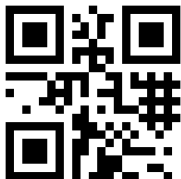
COMPATIBLE DEVICES	
USB Hub	✓
Camera	✓
Barcode Scanner	✓
NFC / RFID Reader	✓
Payment device	✓
Biometric Reader	✓
Swipe Card Reader	✓
Label Printer	✓
Receipt Printer	✓

BRANDING OPTIONS	
Bezel	✓
Header Panel	✓
Back Board	✗
Front Panel	✓

PACKAGING		
Weight	?	?
Type	Assembled – cardboard sleeve	
Size	?	?

Counter/ wall Podium : starting from circa 35kg

The enclosures are made from glass filled polycarbonate and the Podium bodies are made from powder coated steel.

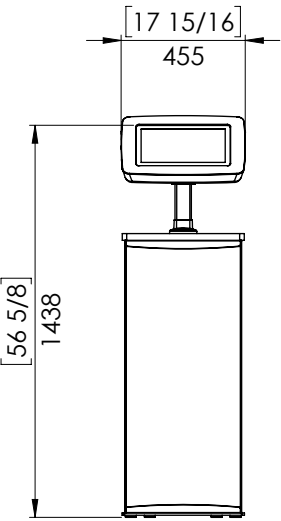
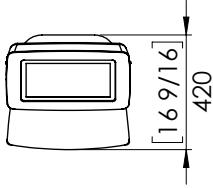


+44(0)203 475 1540

UK Head Office: Unit 49 Eldon Way,
Paddock Wood, Kent, TN12 6BE

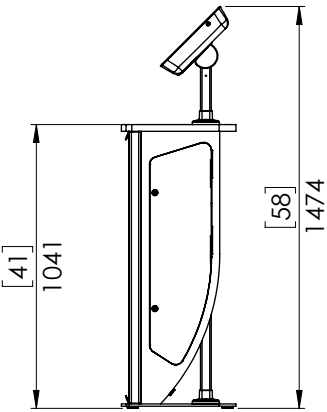
eva2@adseries.com

A[®]SERIES



	Metric (mm, kg)	Imperial (in, lb)
Height	1474	58
ADA Height*	1274	50 1/8
*200mm (7 7/8in) shorter than standard kiosks		
Width	455	17 15/16
Depth	420	16 9/16
Weight*		

*Excluding devices



Bezel Branding

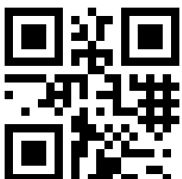


Header Panel



Graphic Panel

Bezel Branding			ART-BEZ-L15
Header Panel ISO			ART-HP-LOX01215-ISO
Front Panel - Branding			ART-SIK
Camera	KAA331	Logitech	CAMERA LOGITECH BRIO ULTRA HD PRO BUSINESS
Camera	KAA168	Logitech	CAMERA LOGITECH C930E WEBCAM 1080P HD BLACK
Barcode Scanner	KAA240-02	Zebra	SCANNER BARCODE ZEBRA SE3307 PL3307 WA 2D KEYBOARD WEDGE
Barcode Scanner	KAA049	Datalogic	SCANNER BARCODE DATALOGIC GRYPHON GFS4470 2D USB A RED
NFC	KAA003	ACS	CARD READER NFC ACS ACM1252U-Z2 R/W PCB USB
Biometric Reader	KAA036-01	U are U	BIOMETRIC FINGERPRINT SCANNER U ARE U 4500 OEM & USB CABLE
Magnetic Swipe Reader	KAA108-B	Magtek	CARD READER MSR MAGTEK TK1 MINI KEYBOARD USB BLACK 21040108



+44(0)203 475 1540

UK Head Office: Unit 49 Eldon Way,
Paddock Wood, Kent, TN12 6BE

eva2@adseries.com

AD SERIES

Electronic Solutions
Design & Manufacture



Octab Range – 3566 – Tablets housed with Kiosks



Highly reliable professional tablets for deploying Android. Designed for 24/7 Commercial use. Compact & rugged. Touchscreen as standard. Also available with no touch.

Key Features



Android



24 Hour
Commercial Use



Capacitive
Touchscreen



Fully compliant with Zoho Assist
unattended



Wifi Enabled



Enrol & provision via
QR code enabled



+44(0)203 475 1540

UK Head Office: Unit 49 Eldon Way,
Paddock Wood, Kent, TN12 6BE

eva2@adseries.com



Octab Range - 3566

Overview

Low cost, highly reliable professional tablets for deploying Android. Designed for 24/7 Commercial use. Compact & rugged. Touchscreen as standard. Also available with no touch.

Markets

Our Android tablets are designed to address retail and commercial sector applications unmatched by consumer tablets – robust, highly reliable and in an unbeatable range of sizes. They cater for both simple and more complex apps

Benefits

- Compact & rugged.
- Rockchip 3566
- Highly reliable, designed for 24/7 commercial use
- Auto-on
- Smaller screen sizes available
- Available for customisation and economical for larger production

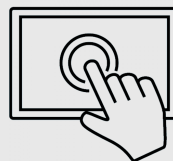
Key Features



Android



24 Hour
Commercial Use



Capacitive
Touchscreen



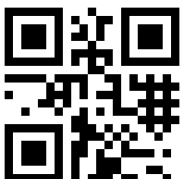
Enrol & provision via
QR code enabled



Fully compliant with
Zoho Assist unattended



Wifi Enabled

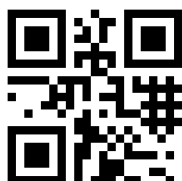


+44(0)203 475 1540

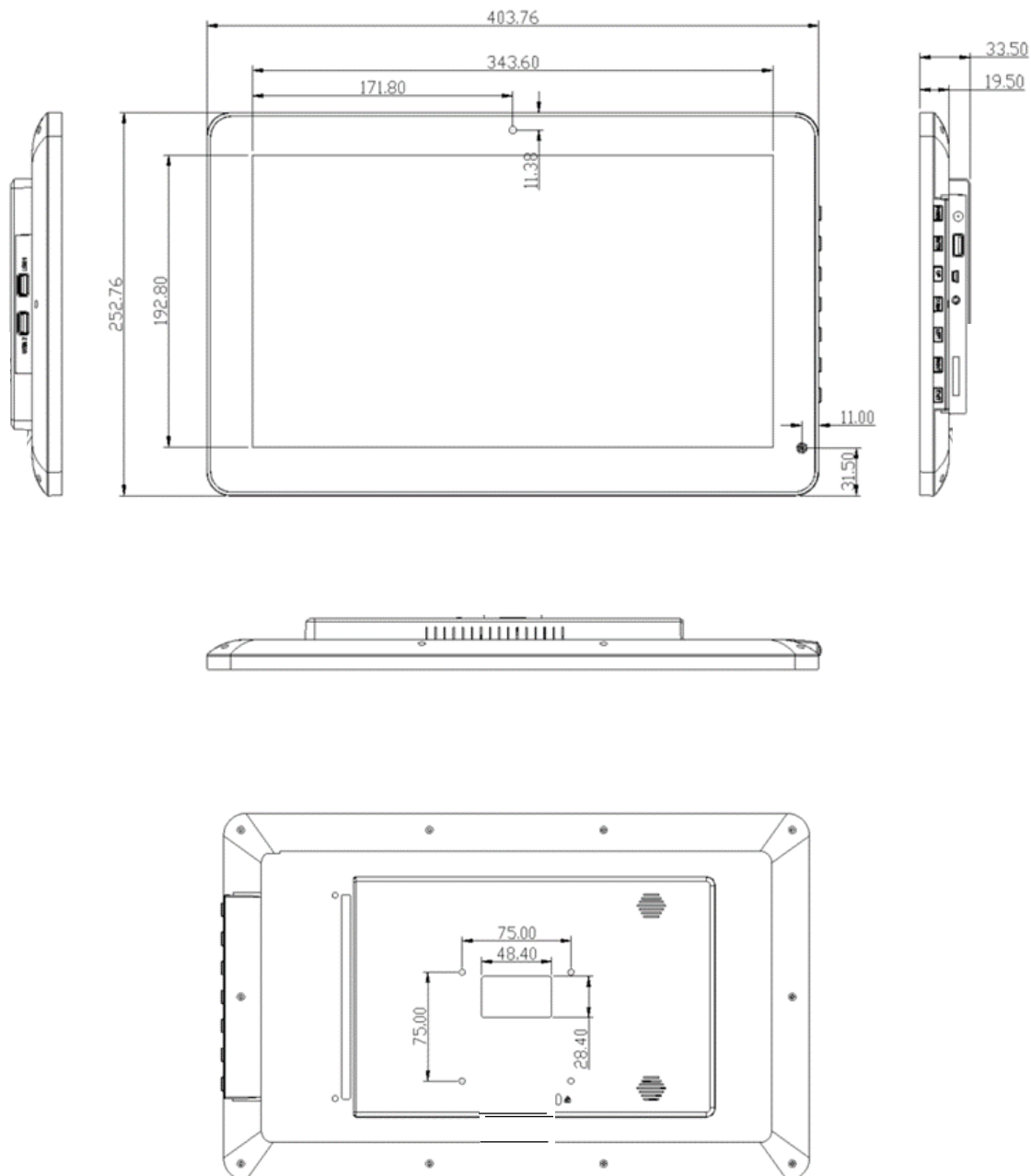
UK Head Office: Unit 49 Eldon Way,
Paddock Wood, Kent, TN12 6BE

eva2@adseries.com

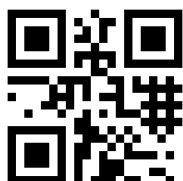
Product Details		
	Product Code	OCTAB156P-T-4
Screen size		
	Screen Size	15.6"
Panel		
	Resolution	1920x1080
	Aspect Ratio	16:9
	Viewing Angle	85x85x85x85
	Active Area	344.16x193.59
	Brightness	250-600
	Contrast	800:1
Touch		
	Touch Technology	Capacitive Touch (G+G optional)
	Touch Points	10
Hardware & OS		
	CPU	Rockchip 3566
	RAM	2GB
	Storage	16GB
	OS	Android version 11
Power		
	Power Consumption	36
	Power Requirement	12V 3A (2A)
	Power Jack	USB Host 3.0
Connections		
	USB Device	Yes
	USB Host	2.1mm
	HDMI	HDMI Output
	Wifi	WiFi 2.4 GHz 802.11b/g/n (optional 5GHz 802.11a)
	Ethernet	No
	Bluetooth	Bluetooth 4.0
	3G dongle	3G USB dongle ext.
	Card Slot	SD,Support up to 32GB
	Earphone	3.5mm earphone
Media		
	Video Format	WMV, AVI, FLV, RM, RMBV, MPEG, TS, MP4, etc. RK3288: support up to 1080p
	Image Format	BMP, JPEG, PNG, GIF
	Audio Format	MP3/WMA/AAC
Optional		
	Camera	2.0M/P Front
Accessories		
	Included In Box	Power Supply
General Information		
	Speakers	2x 3W
	Colour	Black
	Language	Multi-language
	Working Temperature	0-50 degrees
	Unit Size (LxWxHmm)	403.76x252.76x33.50
	Package Size (LxWxHmm)	480x295x88
	Vesa Mounting (mm)	75x75
	Unit Weight (kg)	1.36
	Package Weight (kg)	2.25



Octab 15.6" - OCTAB156P-T-4



*Specifications are typical and subject to change.



+44(0)203 475 1540

UK Head Office: Unit 49 Eldon Way,
Paddock Wood, Kent, TN12 6BE

eva2@adseries.com